



36/3-9 Terminus Street Castle Hill NSW



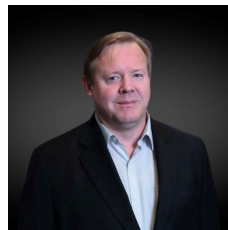
Strategically located in the heart of Castle Hill, this well-presented first floor office enjoys a premium corner position directly across from Castle Towers Shopping Centre.

With immediate access to a wide range of amenities, including major banks, post office, childcare, medical centre, the Castle Hill Metro Station, and a major bus interchange-this office offers both convenience and exceptional exposure.

This First floor office space, now with LIFT ACCESS offers great exposure to a huge amount of passing trade along the active Terminus Street.

[For full version visit the website](https://www.hillscentral.com.au)

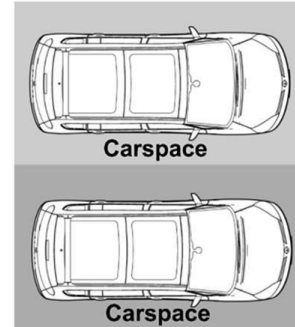
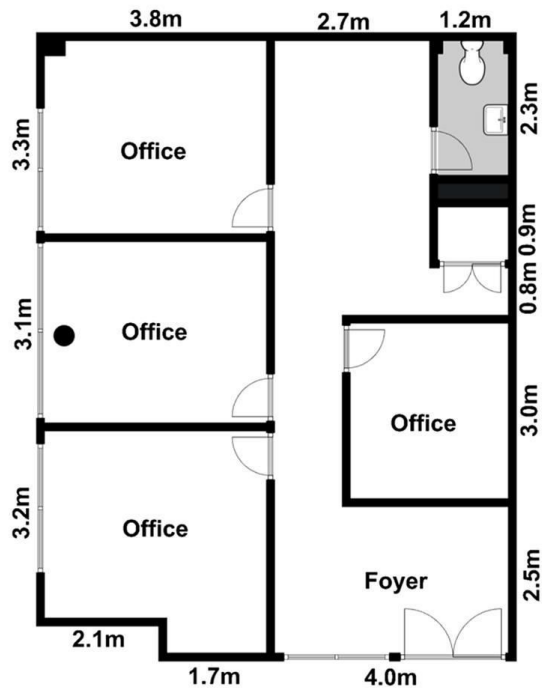
Type : Offices
Building Size : 82 sqm
View : <https://www.hillscentral.com.au/lease/nsw/hills/castle-hill/commercial/offices/8401572>



Damien Austin
02 9634 2299



Simon Russo
02 9634 2299



All Dimensions and figures contained in this advertisement are given in good faith and are believed to be correct. However, we cannot guarantee its accuracy and interested persons should rely on their own enquiries.

401-58 Norwest Boulevard, Norwest