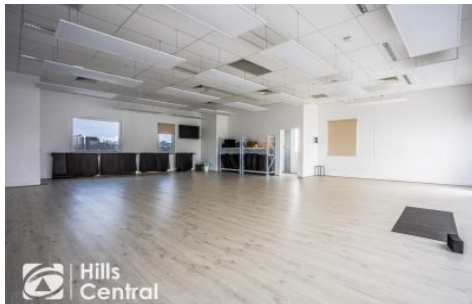




firstnational COMMERCIAL | Hills Central



100/7 Hoyle Avenue CASTLE HILL NSW



ROAD FRONTAGE | LEASED INVESTMENT | 5% NET RETURN

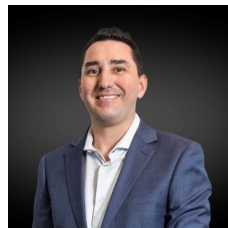
A rare investment opportunity to own this outstanding property offering excellent road frontage to Hoyle Avenue and located directly off Victoria Avenue's busy trading precinct.

The complex is well located within Castle Hill's industrial and trading zone, only minutes to the new Castle Hill Metro station, M2 motorway and renowned Norwest Business Park.

The two level property is superbly fitted out with the ground floor area converted to a large air conditioned training room with open kitchen as well as a two private rooms.

[For full version visit the website](https://www.hillscentral.com.au)

Type : Offices
Building Size : 266 sqm
View : <https://www.hillscentral.com.au/sale/nsw/hills/castle-hill/commercial/offices/8401652>



Simon Russo
02 9634 2299