

49/5-7 Inglewood Place NORWEST NSW

6

NORWEST WAREHOUSE & OFFICES

Located in the heart of Norwest Business Park is a quality mixed warehouse and office complex known as Inglewood Business Centre. A short drive to major arterial roads including the M2, M7 and Windsor Road with easy access to the new North West rail link.

The complex has great access for larger trucks with a rear loading separate from office entrance.

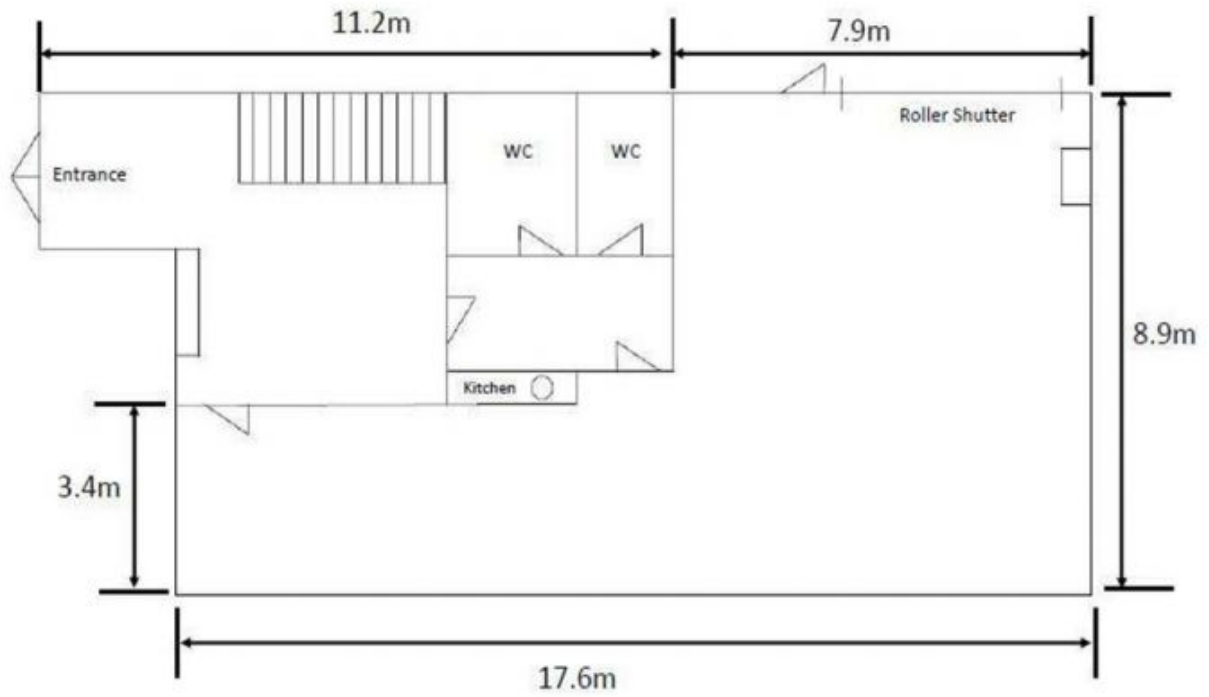
Size
160 sqm warehouse
91 sqm first floor office

[For full version visit the website](https://www.hillscentral.com.au)

Type : Industrial
Building Size : 251 sqm
View : <https://www.hillscentral.com.au/sale/nsw/hills/norwest/commercial/industrial/8401666>



Simon Russo
02 9634 2299



49/5 Inglewood Lower level

*All sizes and dimensions contained in this document are given in good faith and are believed to be correct, but any intending purchaser or lessee should not rely on them as statements or representations of fact but must satisfy themselves and where necessary seek advice.