



firstnational
COMMERCIAL | Hills Central



Agent:
Simon Russo
0414 678 632
Simon@Hillscentral.com.au



Agent:
Bailey Foxall
0417 905 432
Bailey@Hillscentral.com.au



firstnational
COMMERCIAL
Hills Central

222m² 4 car spaces



7 Hoyle Avenue CASTLE HILL NSW



QUALITY WAREHOUSE | UPPER LEVEL | EXCELLENT NATURAL LIGHT

Well positioned industrial strata units, located directly off Victoria Ave, offering easy access to major arterial roads and motorways.

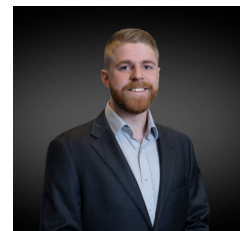
These units are located on the highly desirable upper podium level which offers easy access for both cars with one unit having a turning bay directly opposite allowing excellent manoeuvrability.

The auto-controlled tilt panel frosted glass roller door plus the rear glass windows offers amazing natural light that floods the warehouse.

Type : Industrial
View : <https://www.hillscentral.com.au/sale/nsw/hills/castle-hill/commercial/industrial/8401701>



Simon Russo
02 9634 2299

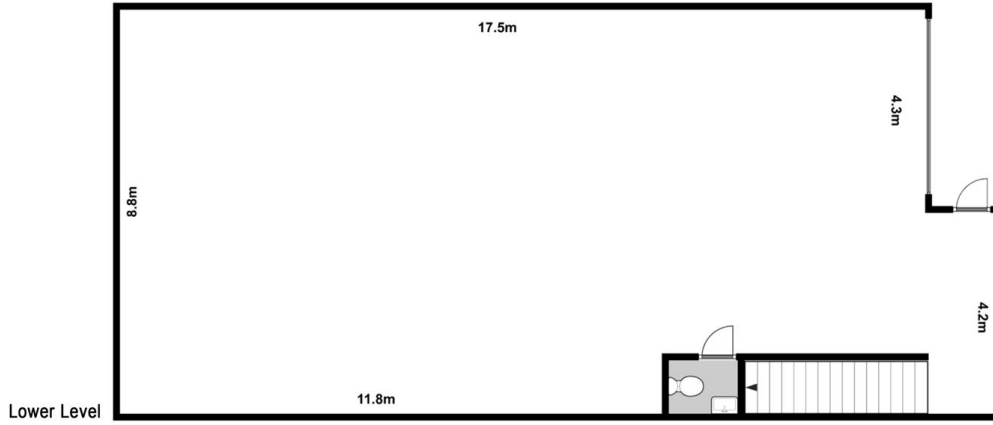
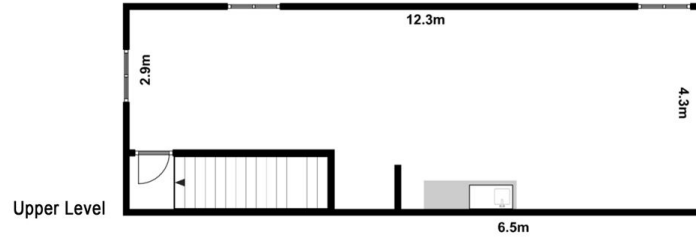


Bailey Foxall
02 9634 2299

[For full version visit the website](https://www.hillscentral.com.au)

<https://www.hillscentral.com.au>

Suite 1/19-21 Terminus St, Castle Hill, NSW 2154
T: 02 9634 2299 E: info@hillscentral.com.au



All Dimensions and figures contained in this advertisement are given in good faith and are believed to be correct. However, we cannot guarantee its accuracy and interested persons should rely on their own enquiries.

125/7 Hoyle Ave, Castle Hill