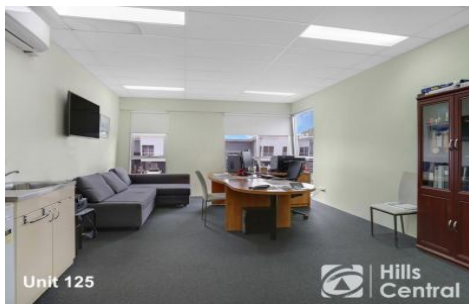




Unit 125



Unit 125



Unit 125



125/7 Hoyle Avenue CASTLE HILL NSW



UPPER DECK | 7 HOYLE | 7 METRE HIGH CLEARANCE

Well positioned industrial strata unit, located directly off Victoria Ave, offering easy access to major arterial roads and motorways.

The unit is located on the highly desirable upper podium level which offers easy access for both cars with one unit having a turning bay directly opposite allowing excellent manoeuvrability.

The auto-controlled tilt panel frosted glass roller door plus the rear glass windows offers amazing natural light that floods the warehouse.

Type : Industrial
Building Size : 222 sqm
View : <https://www.hillscentral.com.au/sale/nsw/hills/castle-hill/commercial/industrial/8401743>



Simon Russo
02 9634 2299

[For full version visit the website](https://www.hillscentral.com.au)