

24/3-9 Terminus Street CASTLE HILL NSW



Walk to Castle Towers & Public Transport

Fantastic first floor, self contained office in great location within very close proximity to Castle Towers, city bus, banks and Castle Hill train station, currently under construction.

Features include:

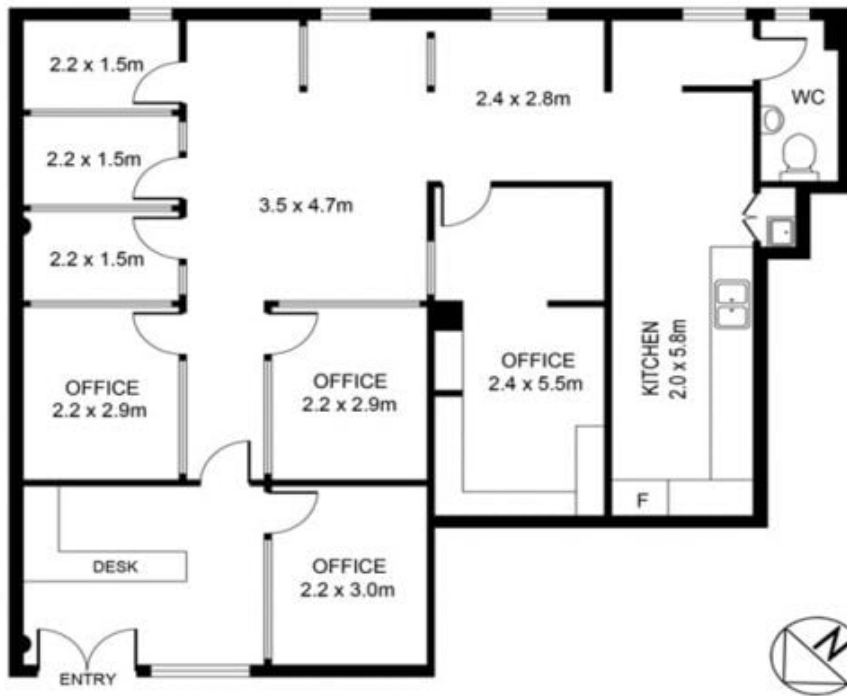
- * Plenty of natural light
- * Windows which open, for fresh air
- * Freshly painted with brand new carpets
- * Internal toilets & kitchenette
- * Open plan layout

[For full version visit the website](https://www.hillscentral.com.au)

Type : Offices
Building Size : 103 sqm
View : <https://www.hillscentral.com.au/lease/nsw/hills/castle-hill/commercial/offices/8401888>



Simon Russo
02 9634 2299



24/9 TERMINUS STREET, CASTLE HILL

DISCLAIMER
 PLANS SHOWN ARE FOR MARKETING PURPOSES ONLY. ALL DIMENSIONS ARE APPROXIMATE AND NOT TO SCALE. THEY ARE SUBJECT TO ERRORS AND INACCURACIES AND NO LIABILITY WILL BE ACCEPTED. INTERESTED PARTIES SHOULD MAKE THEIR OWN INQUIRIES.

