

**49/5-7 Inglewood Place NORWEST NSW**



High Clearance Warehouse + Offices

Great opportunity to lease warehouse/office unit within the popular Inglewood Business Centre, within Norwest Business Park.

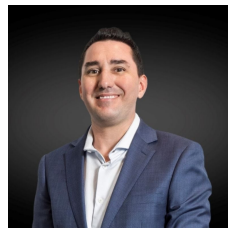
This sought-after location provides quick and easy access to the M2 and M7 Motorways as well as providing fantastic access to staff amenities and public transport being only 750m from the Norwest train station.

Features include:

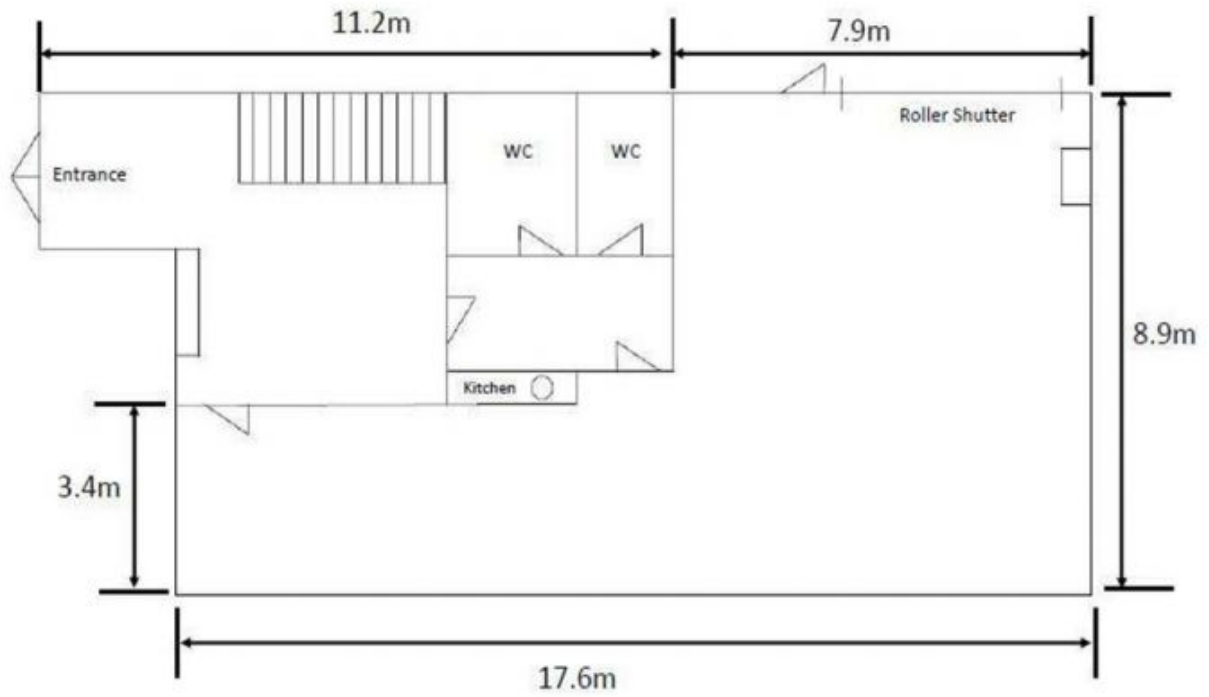
Wide vehicle access allowing 20 and 40 foot deliveries

[For full version visit the website](https://www.hillscentral.com.au)

**Type** : Industrial  
**Building Size** : 251 sqm  
**View** : <https://www.hillscentral.com.au/lease/nsw/hills/norwest/commercial/industrial/8401944>



**Simon Russo**  
02 9634 2299



#### 49/5 Inglewood Lower level

\*All sizes and dimensions contained in this document are given in good faith and are believed to be correct, but any intending purchaser or lessee should not rely on them as statements or representations of fact but must satisfy themselves and where necessary seek advice.