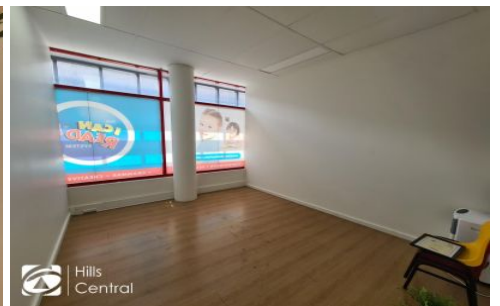




# firstnational COMMERCIAL | Hills Central



## 36/3-9 Terminus Street CASTLE HILL NSW

2 🚗

Castle Hill CBD | Street Exposure | Fit out

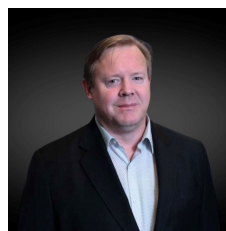
Well located first floor corner office, directly across from an array of services including Castle Towers Shopping Centre, Banks, Post Office, major bus station, child care, medical centre and Castle Hill metro station.

First floor office space, now with LIFT ACCESS offering great exposure to a huge amount of passing trade along Terminus Street.

- \* Existing fit-out can remain or open plan office
- \* Corner location offering great natural light
- \* Internal amenities plus shared onsite

[For full version visit the website](https://www.hillscentral.com.au/lease/ns-w/hills/castle-hill/commercial/offices/8401990)

**Type** : Offices  
**Building Size** : 82 sqm  
**View** : <https://www.hillscentral.com.au/lease/ns-w/hills/castle-hill/commercial/offices/8401990>



**Damien Austin**  
02 9634 2299

<https://www.hillscentral.com.au>

Suite 1/19-21 Terminus St, Castle Hill, NSW 2154  
T: 02 9634 2299 E: [info@hillscentral.com.au](mailto:info@hillscentral.com.au)