

10/286-288 New Line Road DURAL NSW



Dural Business Park | Front Unit | Passing Trade

Excellent location at the centre of one of Dural's most active centres, Dural Business Park. The complex offers a great variety of businesses which includes gyms, martial arts, medical centre, bike showroom, as well as traditional warehouse users'.

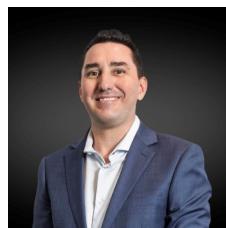
Features include:

Constant passing trade with parking at the door

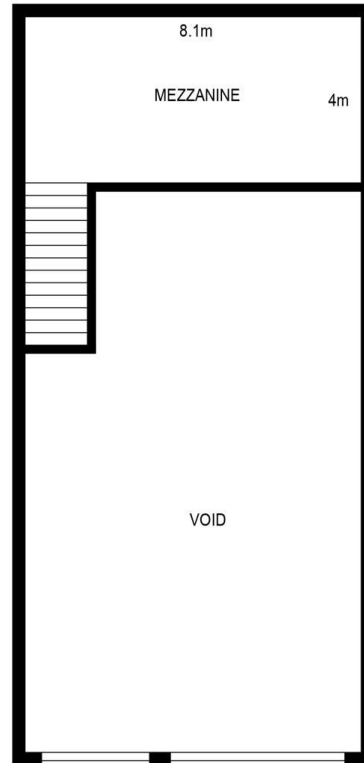
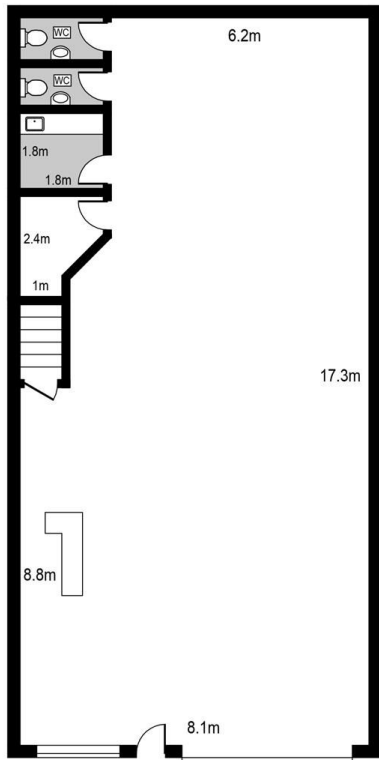
Includes male and female toilet and a false ceiling throughout with air conditioning

[For full version visit the website](https://www.hillscentral.com.au)

**Type** : Offices  
**Building Size** : 144 sqm  
**View** : <https://www.hillscentral.com.au/sale/nsw/hills/dural/commercial/offices/8402103>



**Simon Russo**  
02 9634 2299



---

10/286 New Line Road, Dural