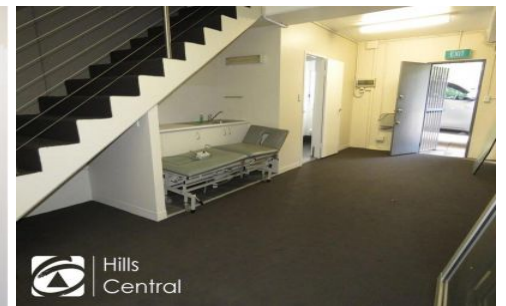




Hills
Central



18A/280 New Line Road DURAL NSW

2

First Floor Office | Great Value

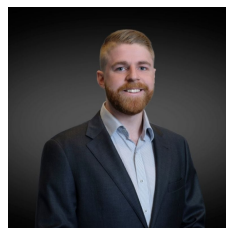
This first-floor office is centrally located in the popular and modern Dural Park complex.

This secure, self-contained office includes:

- * Ground floor foyer, for either storage or showroom
- * Plenty of natural light
- * Quick access to Old Northern Road, Castle Hill and the M2 motorway
- * Two car spaces, plus onsite visitor
- * One private office plus open plan
- * Kitchenette and single toilet included.

[For full version visit the website](https://www.hillscentral.com.au/lease/ns-w/hills/dural/commercial/offices/8402137)

Type : Offices
Building Size : 55 sqm
View : <https://www.hillscentral.com.au/lease/ns-w/hills/dural/commercial/offices/8402137>



Bailey Foxall
02 9634 2299