



29a/276 New Line Road DURAL NSW



First floor modern freshly painted offices offering excellent internal glass fit-out of 4 offices, IT area and a meeting room.

The property includes internal first floor toilets and a kitchenette area, plus plenty of natural light.

The area comes with onsite parking with the option of undercover secure parking.

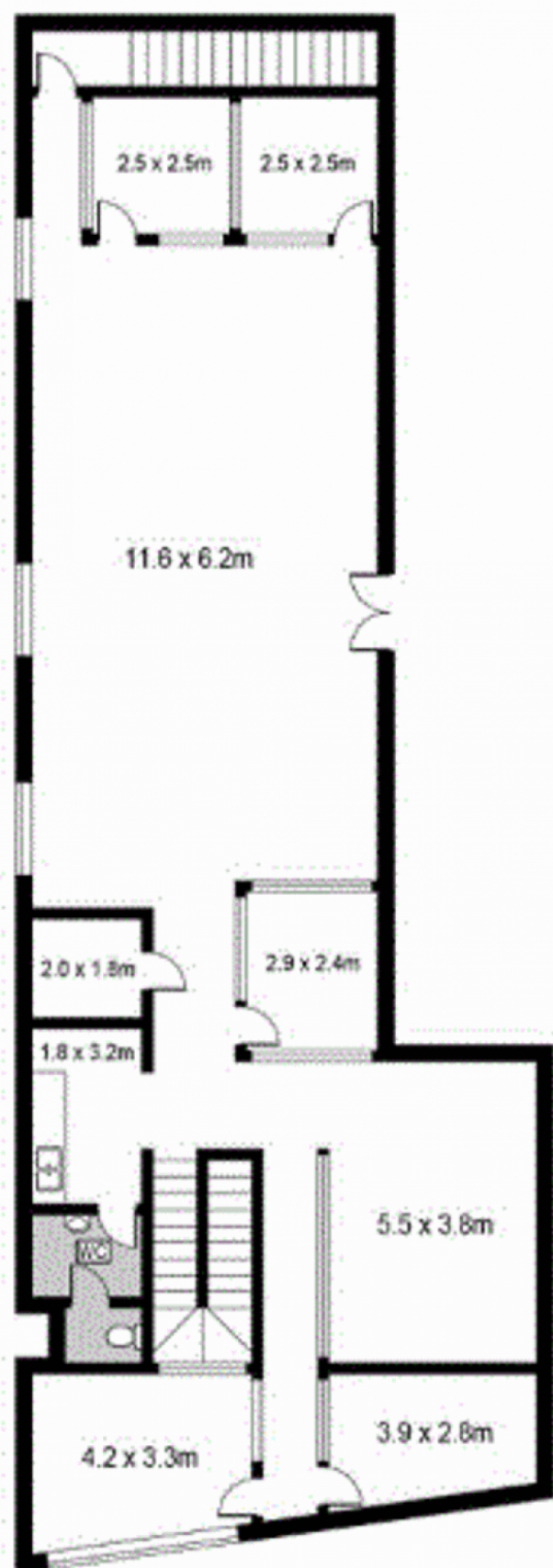
Don't miss the opportunity for this unique offering in the heart of Dural, within proximity to shops, cafes and major arterial roads, such as M2, M1 & North Connex.

Type : Offices
Building Size : 195 sqm
View : <https://www.hillscentral.com.au/lease/nsw/hills/dural/commercial/offices/8402175>



Simon Russo
02 9634 2299

[For full version visit the website](https://www.hillscentral.com.au)



UPSTAIRS 29