



1.02/1-3 Burbank Place NORWEST NSW

Fantastic office suite in one of the most popular buildings in Norwest, The Solent Centre. Located within walking distance to the Norwest Metro station and Norwest Market Town Shops.

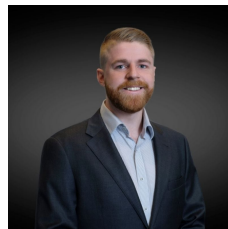
Benefits include:

- * Abundance of onsite visitor parking
- * Ground floor access
- * Efficient use of space, with shared amenities plus internal kitchenette
- * Three car spaces

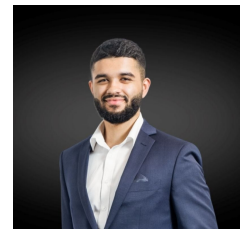
Available NOW

[For full version visit the website](https://www.hillscentral.com.au)

Type : Offices
Building Size : 71 sqm
View : <https://www.hillscentral.com.au/lease/nsw/hills/norwest/commercial/offices/8402213>



Bailey Foxall
02 9634 2299



Zartosht Sundal
02 9634 2299