

49/5-7 Inglewood Place NORWEST NSW



HIGH CLEARANCE WAREHOUSE + OFFICES | POPULAR COMPLEX

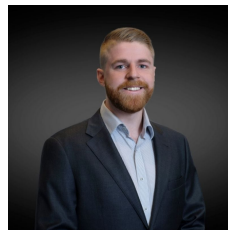
Centrally located in Norwest Business Park, this highly sought-after location provides quick and easy access to the M2 and M7 Motorways as well as providing fantastic access to staff amenities and public transport being only a short walk from the Norwest metro.

Located on the upper level of Inglewood Business Centre this unit allows for excellent truck access plus ample onsite visitor parking.

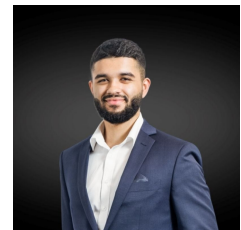
Additional Features include:

[For full version visit the website](https://www.hillscentral.com.au)

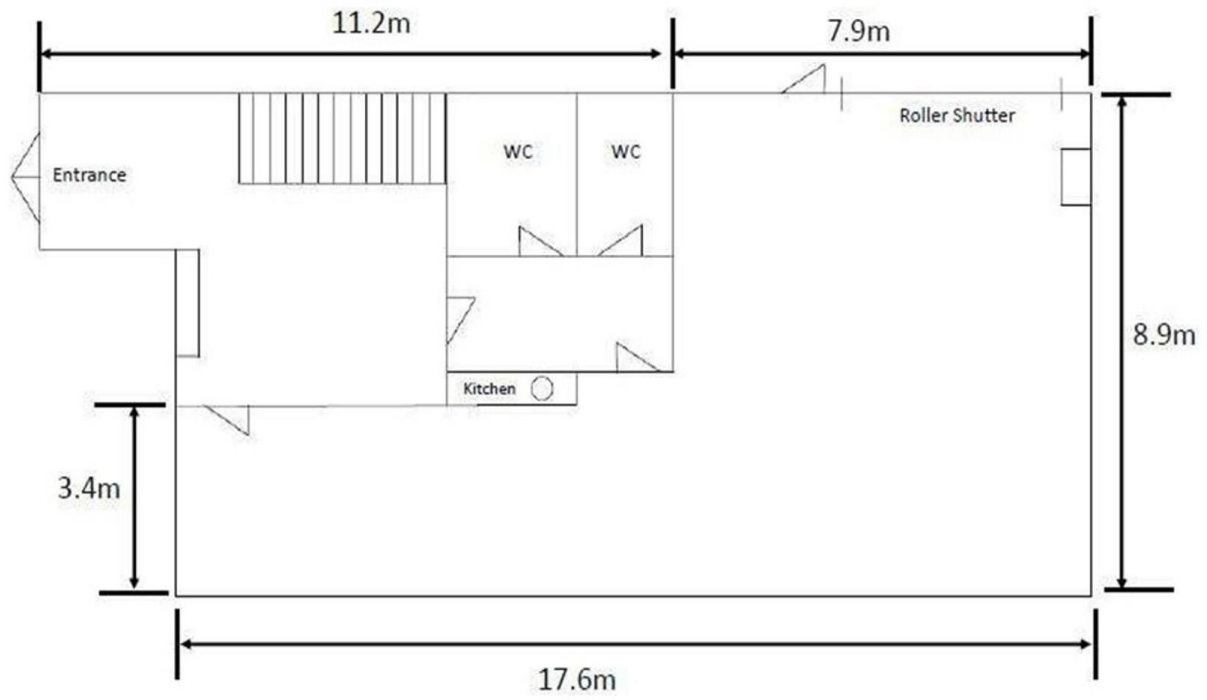
Type : Offices
Building Size : 251 sqm
View : <https://www.hillscentral.com.au/lease/nsw/hills/norwest/commercial/offices/8402228>



Bailey Foxall
02 9634 2299



Zartosht Sundal
02 9634 2299



49/5 Inglewood Lower level

*All sizes and dimensions contained in this document are given in good faith and are believed to be correct, but any intending purchaser or lessee should not rely on them as statements or representations of fact but must satisfy themselves and where necessary seek advice.