



24/276-278 New Line Road Dural NSW

5 🚗

#### HIGH CLEARANCE WAREHOUSE | CABINETRY USE

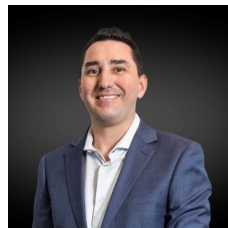
Premium industrial estate situated in a highly sought-after location. A rare and fantastic opportunity to occupy a strata warehouse & office, which is perfect for cabinet making or the like.

Wakefield is one of the most sought-after buildings in Dural. Located only 8km to Castle Hill and within a short drive to major infrastructure such as Cherrybrook Metro, M2 motorway, and NorthConnex, plus within proximity to Round Corner Dural.

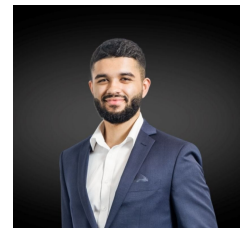
This excellent industrial complex offers wide access to

[For full version visit the website](https://www.hillscentral.com.au)

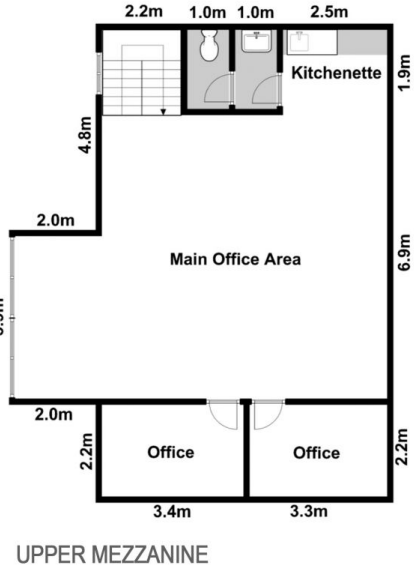
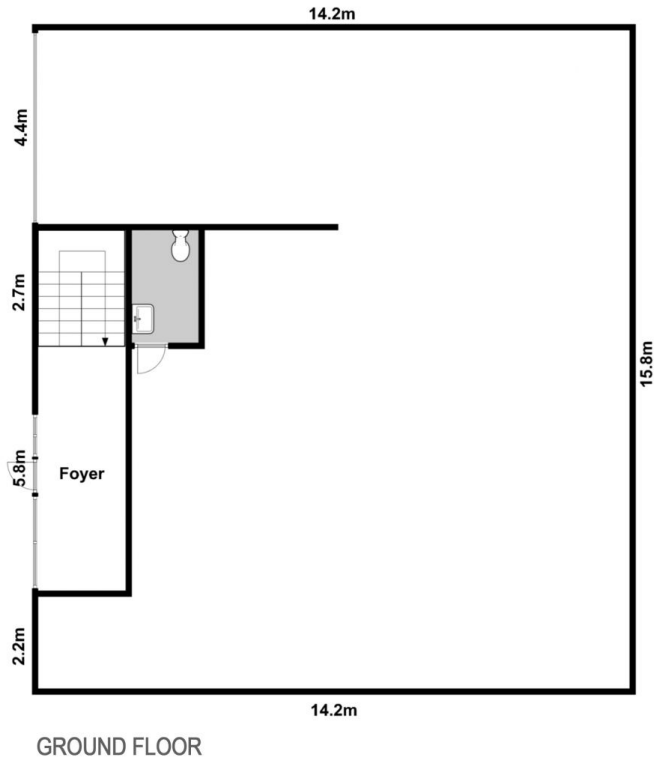
**Type** : Industrial  
**Building Size** : 307 sqm  
**View** : <https://www.hillscentral.com.au/lease/nsw/hills/dural/commercial/industrial/8410080>



**Simon Russo**  
02 9634 2299



**Zartosht Sundal**  
02 9634 2299



All Dimensions and figures contained in this advertisement are given in good faith and are believed to be correct. However, we cannot guarantee its accuracy and interested persons should rely on their own enquiries.

24/276 New Line Rd, Dural