



## 233 Prospect Highway Seven Hills NSW



An outstanding opportunity to position your business on one of the area's busiest thoroughfares with excellent connectivity to M2, M4 and M7 Motorways.

Offering incredible exposure and excellent signage opportunities to capture passing traffic. This space is ideal for consulting, medical, showroom, office, or similar uses (subject to council approval).

Property features include:

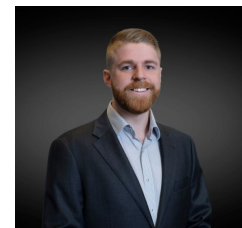
- Free-standing building with professional street presence
- Large reception
- Four private offices & two meeting rooms
- Two open workspaces (one with separate entry).

[For full version visit the website](https://www.hillscentral.com.au)

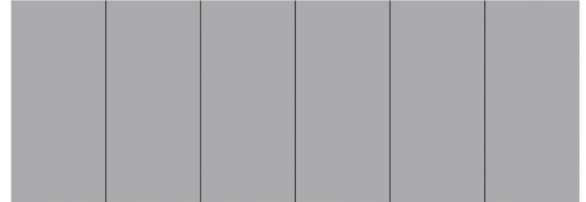
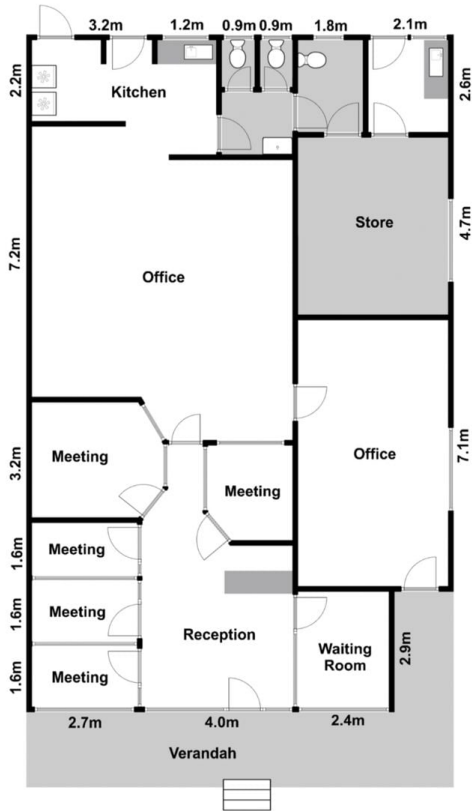
**Type** : Offices  
**Price** : \$78,500 PA Net + GST  
**Building Size** : 197 sqm  
**Land Size** : 581 sqm  
**View** : <https://www.hillscentral.com.au/lease/nsw/western-sydney/seven-hills/commercial/offices/8465273>



**Simon Russo**



**Bailey Foxall**



Car Spaces

All Dimensions and figures contained in this advertisement are given in good faith and are believed to be correct. However, we cannot guarantee its accuracy and interested persons should rely on their own enquiries.

**233 Prospect Highway, Seven Hills**